

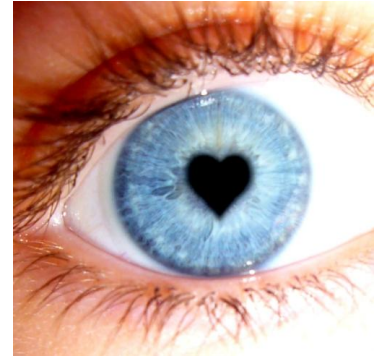


**This is Prof Dadds first and only
visit to New Zealand and it's right
here in Dunedin – don't miss this**

are proud to present:

**A two hour research talk with Professor
Mark Dadds (University of New South
Wales, Sydney, Australia)**

**Love, eye contact, and the
development and treatment of
developmental psychopathy**



Professor Mark Dadds is Principal Research Fellow of the National Health and Medical Research Council of Australia, Professor of Psychology at the University of New South Wales, Sydney Australia, and Foundation Chair of Parenting Sciences at the Institute of Psychiatry, Kings College London. He has developed and directed several national intervention programs for children, youth, and their families, at risk for mental health problems which are now implemented worldwide. In the last decade he has been awarded over \$4,000,000 in research funding for his work in clinical child and family mental health. He has been National President of the Australian Association for Cognitive and Behavioural Therapy, Director of Research for the Abused Child Trust of Queensland, and a recipient of multiple awards. He has authored 4 books and over 100 papers on child and family psychology and given keynote

addresses worldwide including World Congresses. Since 2005 Professor Dadds has worked to establish a collaborative clinical research centre focused on developing state-of-the-art treatments for children and adolescents with behavioural and emotional problems. For a recent interview with Professor Dadds see http://www.youtube.com/watch?v=O9sM_XEldf4

In this two hour presentation Professor Dadds will talk about his work leading a team of researchers looking at emotion processing deficits in various forms of child behavioural problems. Their research has been looking at low eye contact with attachment figures and the developmental origins of psychopathy. This research may assist us to understand the links between early development and the development of moral conscience and empathic concern. Low eye contact with parents may be an impediment to how children with conduct problems and children with high callous-unemotional traits respond to positive parenting. Professor Dadds will discuss this research and implications for treatment of children with low empathy or callous-unemotional traits, and their families.

- This presentation will be of relevance and interest to anyone who works with, or cares for children, especially children who have difficulties with behavioural problems.
- Ideal for parents, grandparents, extended whanau, foster parents, caregivers, teachers, teacher aides, home-based carers, clinicians, doctors, nurses, psychologists, counsellors, social workers, CYF staff, family care workers and community care services.

12.30 - 2.30pm, Tuesday, October 2

Venue: Psychology Associates Development Centre, First Floor, 49 Water Street, Dunedin

\$92.00 (incl GST) if registered by 14th Sept.
\$115.00 (incl GST) if registered after 14th Sept.
\$69.00 (including GST) for students
Includes handouts and attendance certificate

Registration: See second attachment or register online at www.psychologyassociates.co.nz